

Webinar

Resection techniques in endoluminal surgery



sponsored by

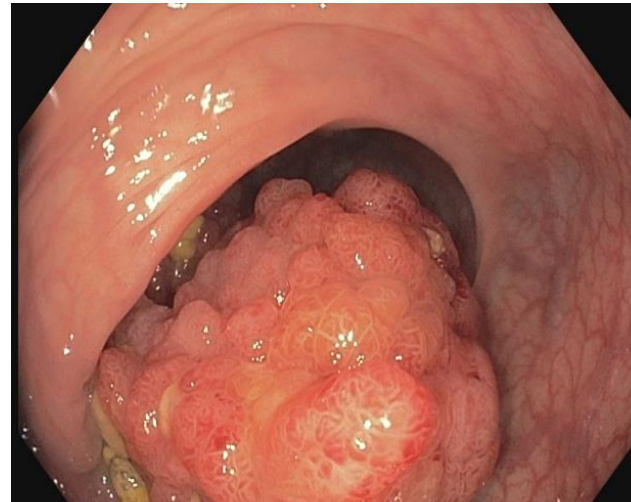
o o o | o v e s c o



EMR+ und ESD+: Easier and faster thanks to multi-channel technique and LiftUp[®] injection



Endoscopic Resection



fast, safe

R0, en bloc



piece meal and R0?

time-consuming, risky



Ono, H. *et al.*, 2001

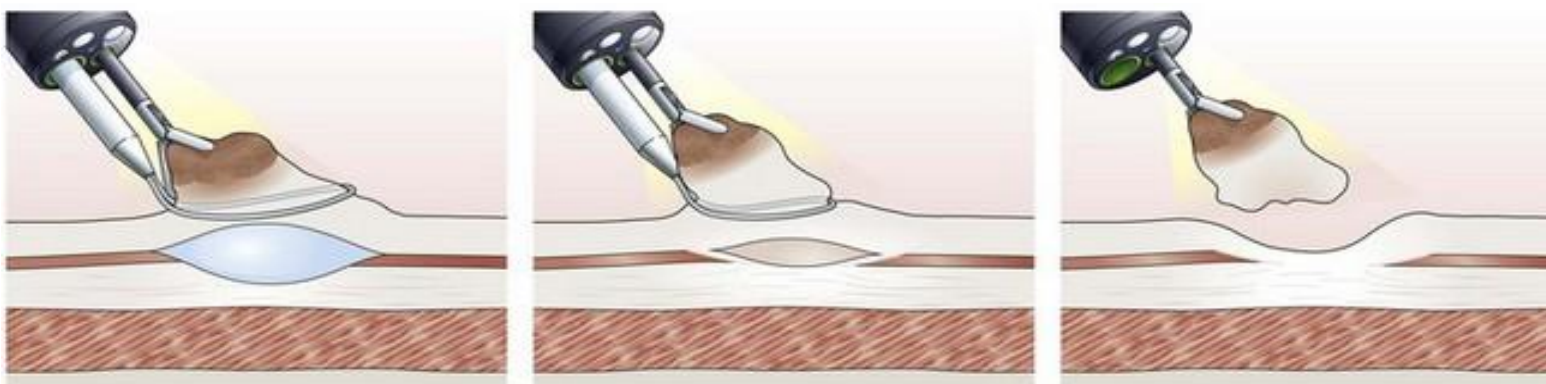
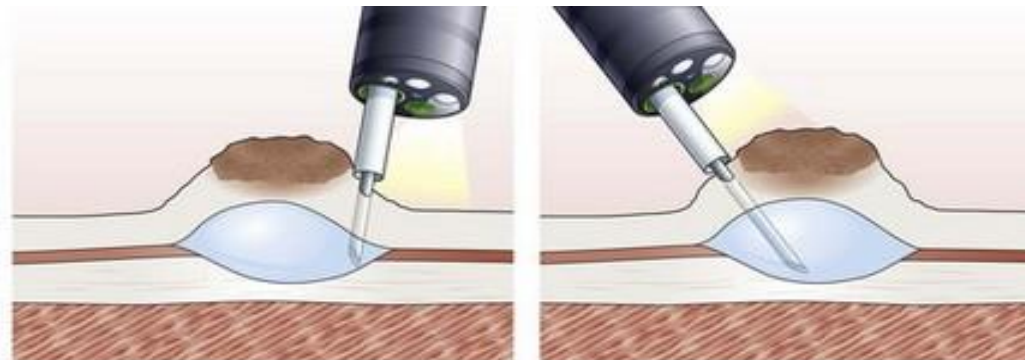
Maple DO FASGE, J. T. *et al.*

Gastrointest. Endosc., 2015



Two channel endoscope: „grasp and snare“

- Small distance between channels
- Not available everywhere, expensive!





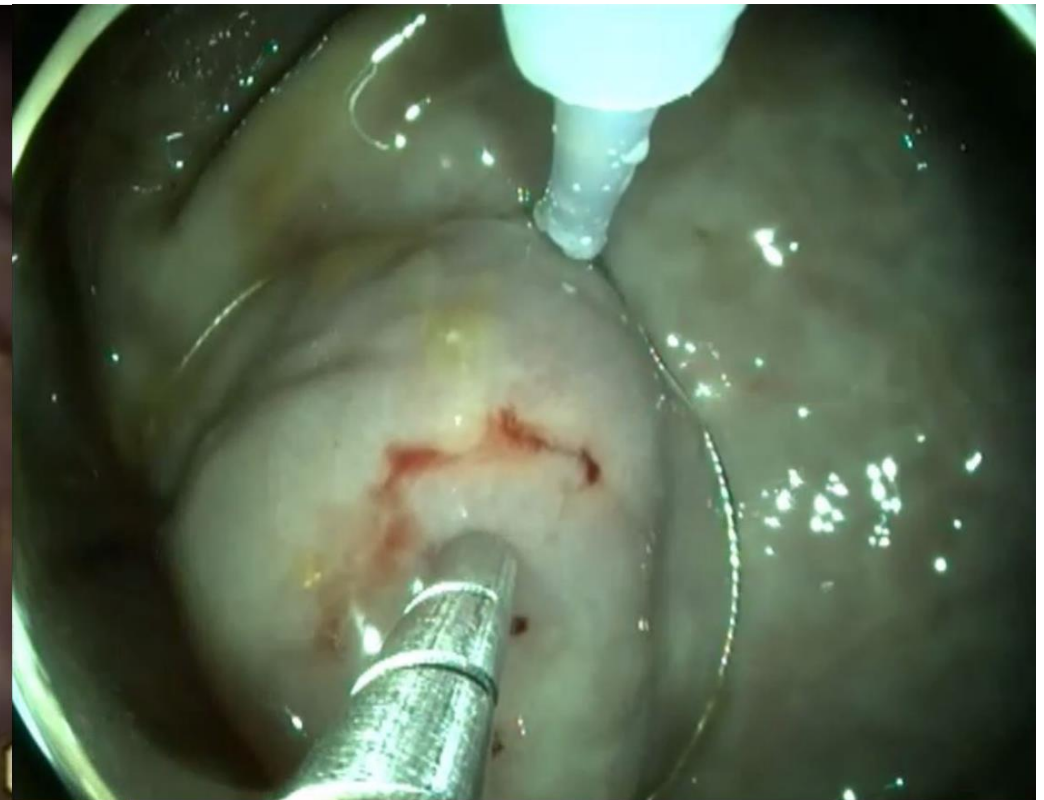
AWC: A New Device For Endoscopic Resection







AWC: A New Device For Endoscopic Resection





Case Series; Walter et al. EIO 2019

<i>Technique</i>	<i>Location</i>	<i>Size (max)</i>	<i>Histology</i>
EMR	Posterior wall S.	31 mm	Low-grade, R0
EMR	Ascending C.	45 mm	Low-grade, 3 pcs.
EMR	Transverse C.	42 mm	High-grade, R0
EMR	Sigmoid C	45 mm	Low-grade, 2 pcs.
ESD	Greater curv. S.	17 mm	pT1a, R0, low risk
ESD	Posterior wall S.	37 mm	pT1a, R0, low risk
ESD	Rectum	37 mm	pT1, R0, low risk
ESD	Rectum	33 mm	High-grade, R0



LIFT-UP für ESD+/EMR+??

Lift-up:

- Cold => liquid
- Body temp => gel-like substance

ESD: better cushion, less re-injection

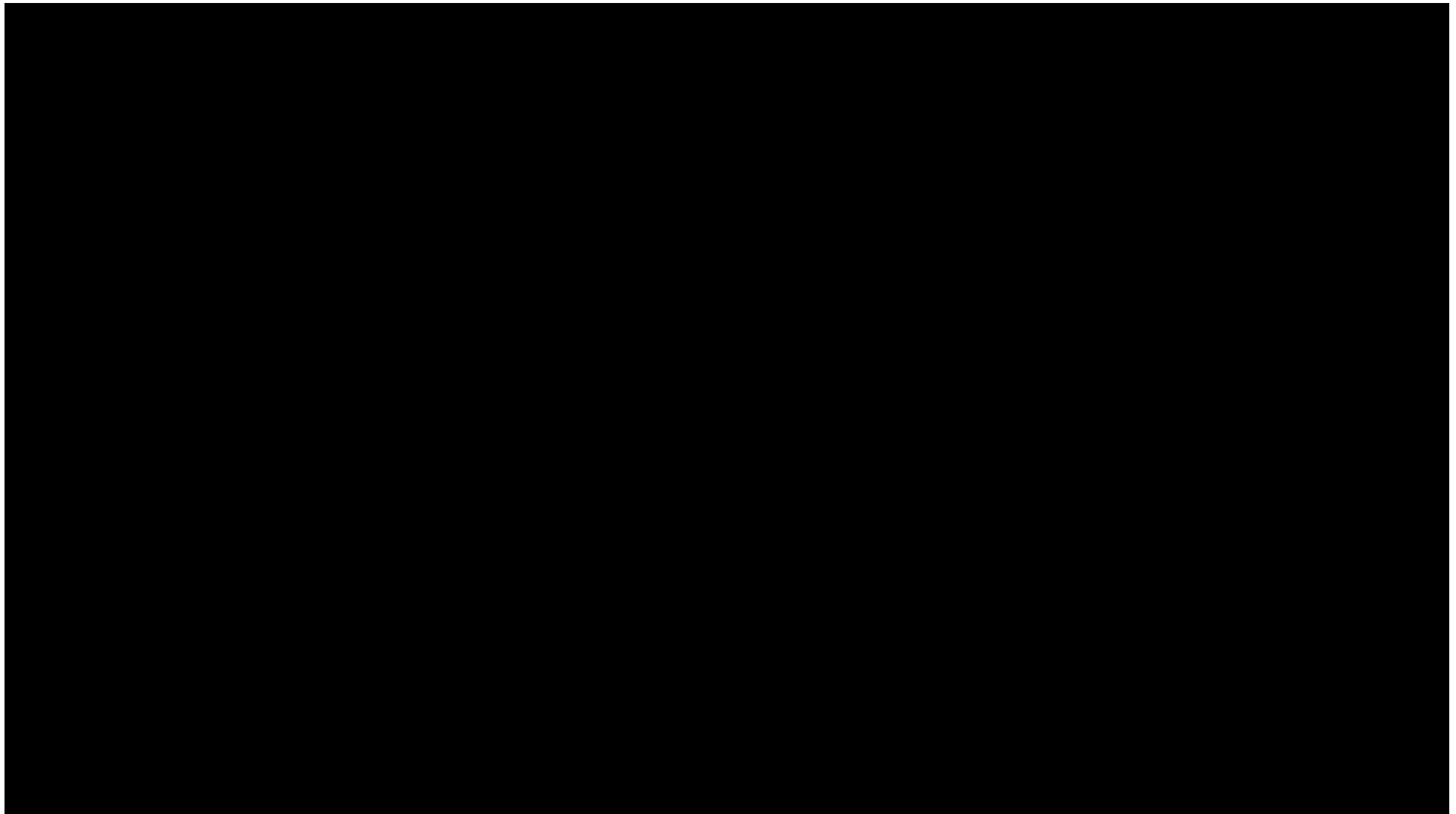
EMR: ideal for knife-assisted resection plus AWC

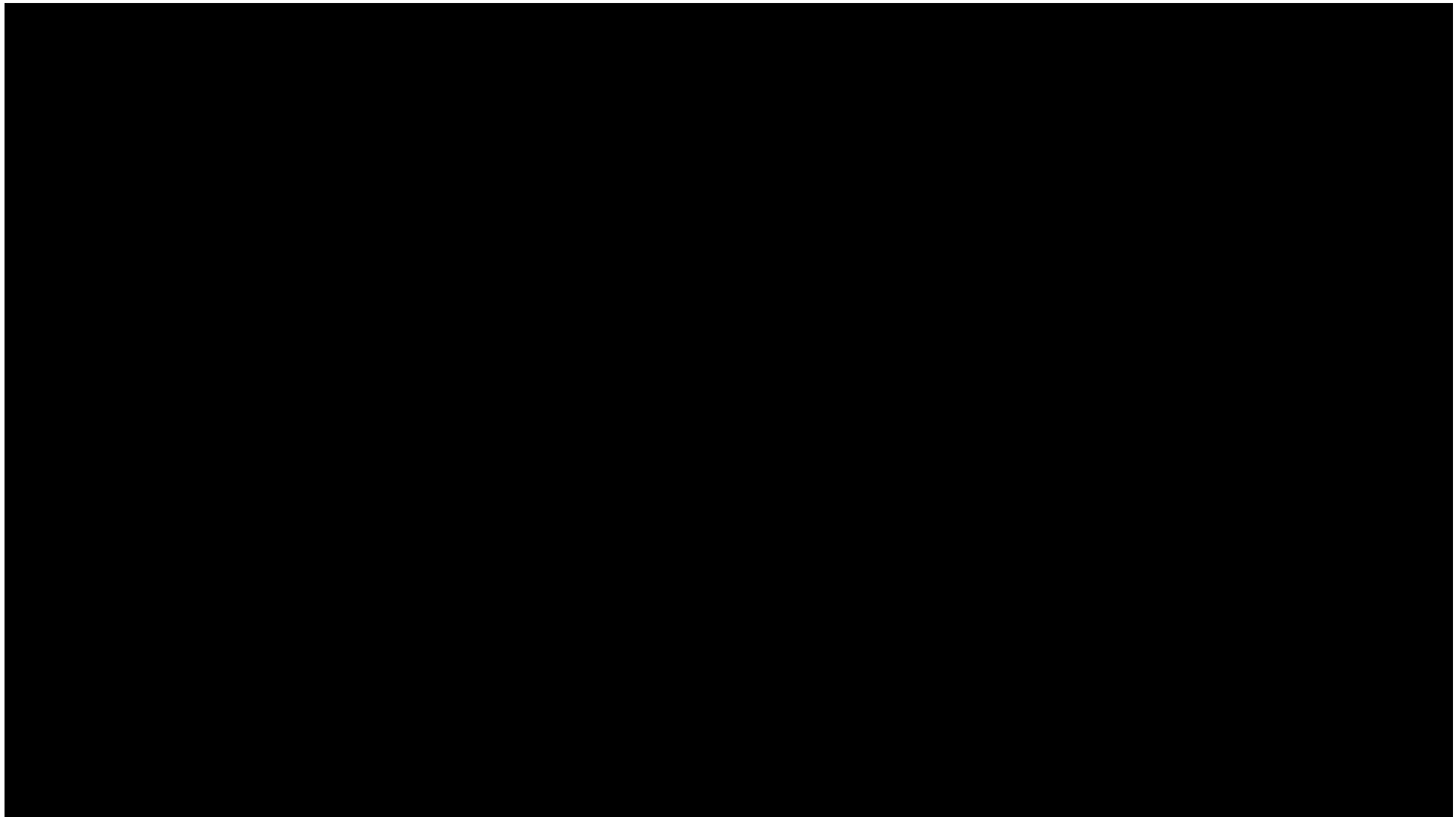




Resect PLUS and Liftup









CONCLUSION:

- Several resection techniques depending on location, type, size and morphology
 - No dogma (ESD only)
 - Procedure related risk \Leftrightarrow oncological outcome
 - EMR+, ESD+ applying AWC and LiftUp open new options for endoscopic resection
- => **Become familiar with these options and make your own experience!**